

User Manual

T-SCAN Manager

USER'S GUIDE

CODE : TSCAN_Manager

DATE : July 2020

REV. : A

EDITION : EN

INDEX

1. GENERALITY.....	3
2. DEVICE CONFIGURATION	3
3. PANELS	3
3.1 Main Control bar.....	3
3.2 Device list panel	4
3.3 USB Configuration panel	5
3.4 USB Configuration parameters	6

1. GENERALITY


The **T-SCAN Manager** application provides the necessary tools to display the human body temperature measurements performed via T-SCAN 540 device.


The application consists of three floating windows:

- i. the main control bar
- ii. the window showing the list of connected devices and the performed measurement
- iii. the configuration and display window via **USB** port in simulation of serial port (**COM port**).

The application implements an **UDP** server on port 64888. The devices connect to the server as clients that communicate in broadcast mode.

2. DEVICE CONFIGURATION

To configure the device you need to press the button  on the main control bar.

When opening the configuration panel, you must connect to the device by selecting the COM port. As soon as the application loads the parameters currently present on the device, it is possible to modify them as needed and, finally, pressing the button , you can upload the new configuration to the device.


3. PANELS


Below the panels available on TSCAN Manager.

3.1 Main Control bar



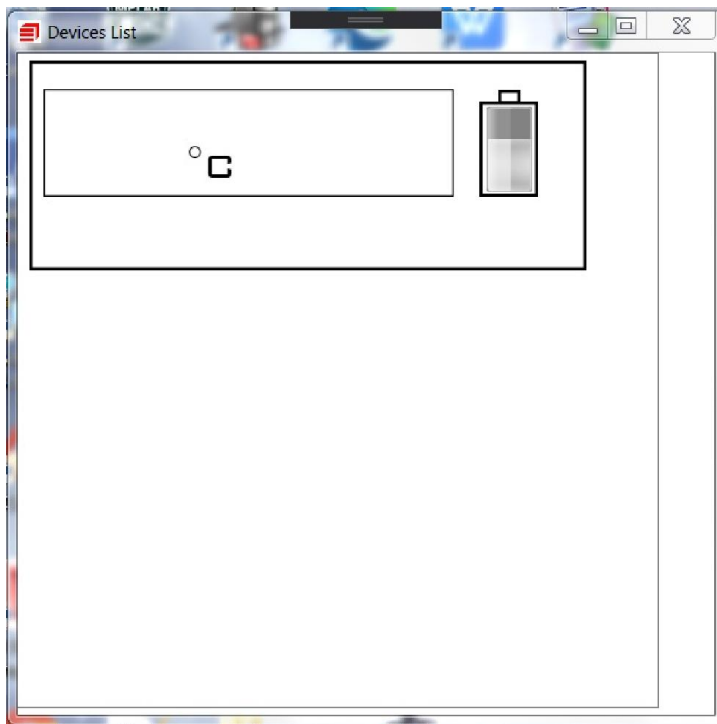
Picture 1 – Main Control bar

The main control bar has two buttons. The button  opens the panel that displays the list of connected devices (this panel is open by default when the application starts, therefore, the button has effect only if the panel is closed by the operator).

The button  opens the device configuration panel via USB connection.

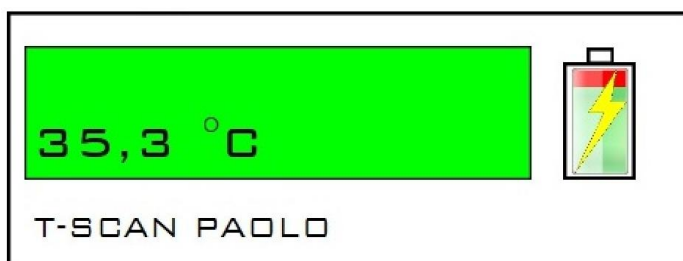
3.2 Device list panel

The display panel of connected devices displays a list of connected devices in graphic form. As the devices connects via Wi-Fi, they are placed in the panel one below the other.



Picture 2 – Device List panel

The device indication panel shows the measurement made by the device. The background of the area, showing the measurement, is white (neutral) if the measurement is not valid or not acquired, green if the measurement is below the warning threshold, orange if the measurement is below the warning threshold alarm, red if it exceeds the alarm threshold.




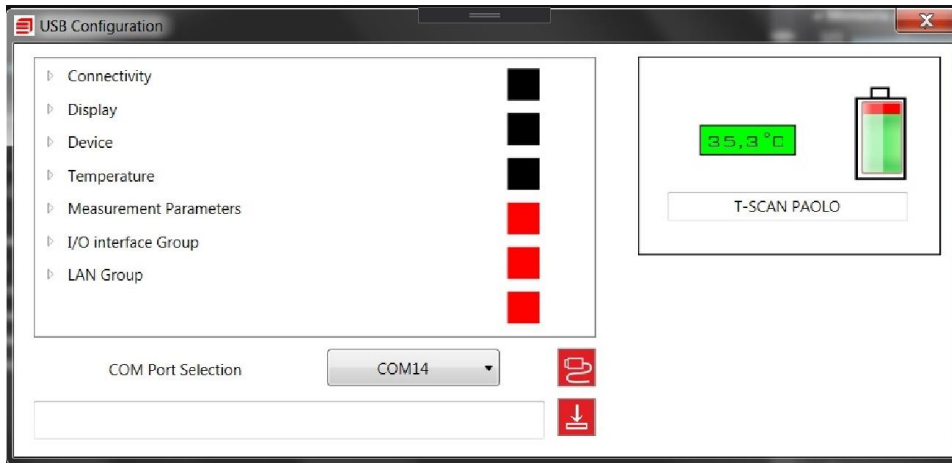
Picture 3 – Device indication panel

The installation name given by the user is displayed below the measurement area. The panel also displays the battery charge level (if the device is charging the lightning

bolt symbol is displayed).

3.3 USB Configuration panel

By pressing the  button on the control bar, the device configuration panel via the USB serial port opens.



Picture 4 – USB Configuration panel

The right sub-panel displays information relating to the measurement made, the name of the device and the battery status. The left sub-panel displays all the settable options in an expandable tree diagram.

The configuration controls are divided into groups. By clicking on the group name, the tree diagram expands showing the various selectable options.

The groups available are:

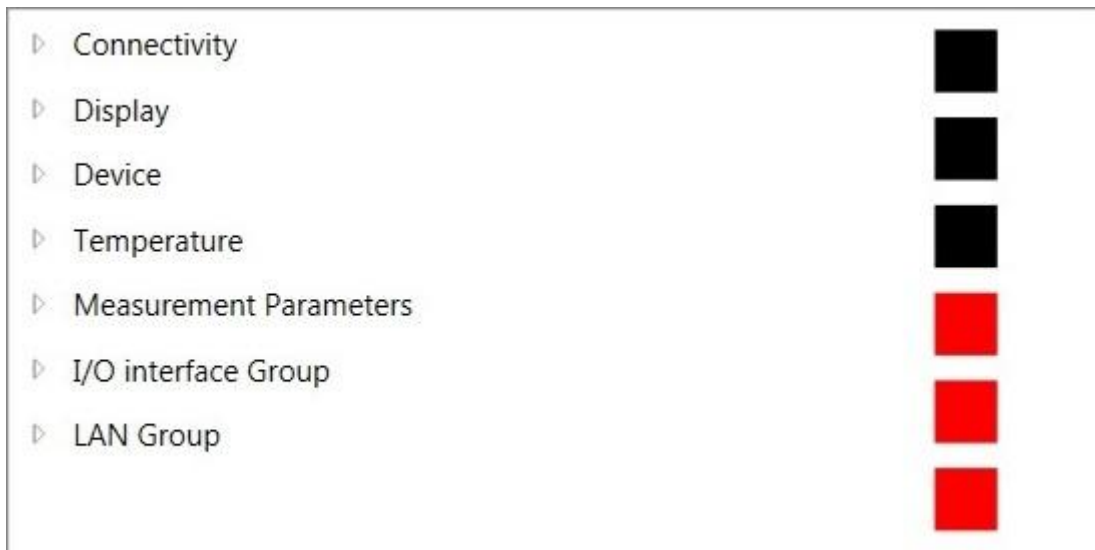
- Connectivity
- Display
- Device
- Temperature
- Measurement Parameters
- I/O interface Group
- LAN group.

Before making any configuration changes, it is necessary to establish communication with the device by selecting the COM port to which it is connected and, pressing the button with symbol



, the application reads the current configuration from the device and displays it.

3.4 USB Configuration parameters



Picture 5 – USB Configuration parameters

Connectivity

Wi-Fi: enable or disable Wi-Fi.

Dhcp: enable or disable Dhcp.

Display

Alarm View / Hide: disable or enable the device's green, orange or red light.

Fahrenheit: enables the display of Fahrenheit scale measurements instead of Celsius.

Device

Model: is a read-only field in which the device model is displayed.

Installation Name: name given to the user by the device. It will be displayed on the Device Panel to identify the device.

Audio Volume: it regulates the audio volume of the device.

HW Release: the field is read only, the hardware revision of the device is displayed.

FW Release: the field is read only, the device firmware revision is displayed.

Status: the field is read only, the status mask is displayed (refer to the user manual for further information).

Serial Number: the field is read only and the serial number of the device is displayed (unique identification).

Approach Speech Disable: it allows to enable the voice guidance inviting to get closer for the measurement.

Result Speech Disable: it allows to enable the speech providing the measurement result (green, yellow if warning enabled, red).

Temperature

Warning Temperature: warning threshold

Alarm Temperature: alarm threshold

User Meas Offset: the user can insert an offset in the measurement

Measurement Parameters

Min Display Meas Hold: minimum time of persistence of the measurement on the display

Max Display Meas Hold: maximum time of persistence of the measurement on the display

I/O Interface Group

Relay Mode. Following options are available:

OFF the relay is not activated

OK the relay is implemented only in case of measurement below the warning threshold

OK WR the relay is activated below the warning threshold

ALARM the relay is activated when the alarm threshold is exceeded

OK WR AL the relay is activated at each measurement regardless of the outcome of the measurement.

Relay Toggle Time: it is the time in ms elapsed from the actuation of the relay and its releasing.

LAN Group

Wi-Fi SSID: SSID of the WAN

Wi-Fi Password: password of the WAN

IP Address: active only if Dhcp has not been enabled. It is the address of the device

Subnet Mask: it is the subnet mask of the WAN

IP Gateway: WAN gateway

UDP Server: if you do not want broadcast communication, you can indicate the IP address of the host on which the application resides.

For technical support contact our service office:

corso Fleming 27 – Druento (TO) - Tel. (011) 9941911 - Fax (011) 9941900

en.teseo.clemessy.com

info.teseo@eiffage.com

products.teseo@eiffage.com